
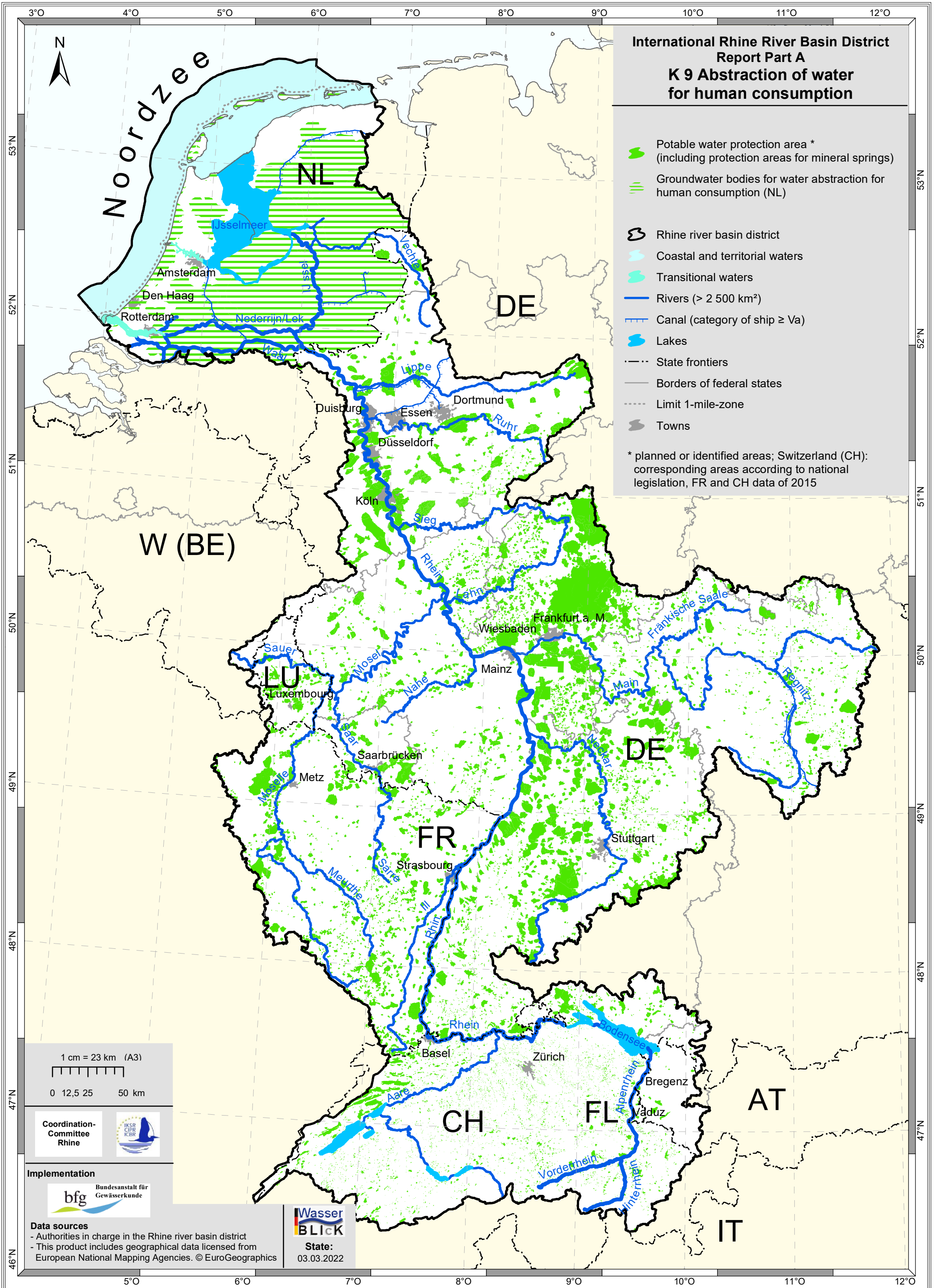


**International Rhine River Basin District
Report Part A
K 9 Abstraction of water
for human consumption**

-  Potable water protection area *
(including protection areas for mineral springs)
-  Groundwater bodies for water abstraction for
human consumption (NL)
-  Rhine river basin district
-  Coastal and territorial waters
-  Transitional waters
-  Rivers (> 2 500 km²)
-  Canal (category of ship ≥ Va)
-  Lakes
-  State frontiers
-  Borders of federal states
-  Limit 1-mile-zone
-  Towns

* planned or identified areas; Switzerland (CH):
corresponding areas according to national
legislation, FR and CH data of 2015



1 cm = 23 km (A3)
0 12,5 25 50 km

Coordination-
Committee
Rhine



Implementation



Data sources

- Authorities in charge in the Rhine river basin district
- This product includes geographical data licensed from
European National Mapping Agencies. © EuroGeographics



State:
03.03.2022