
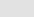







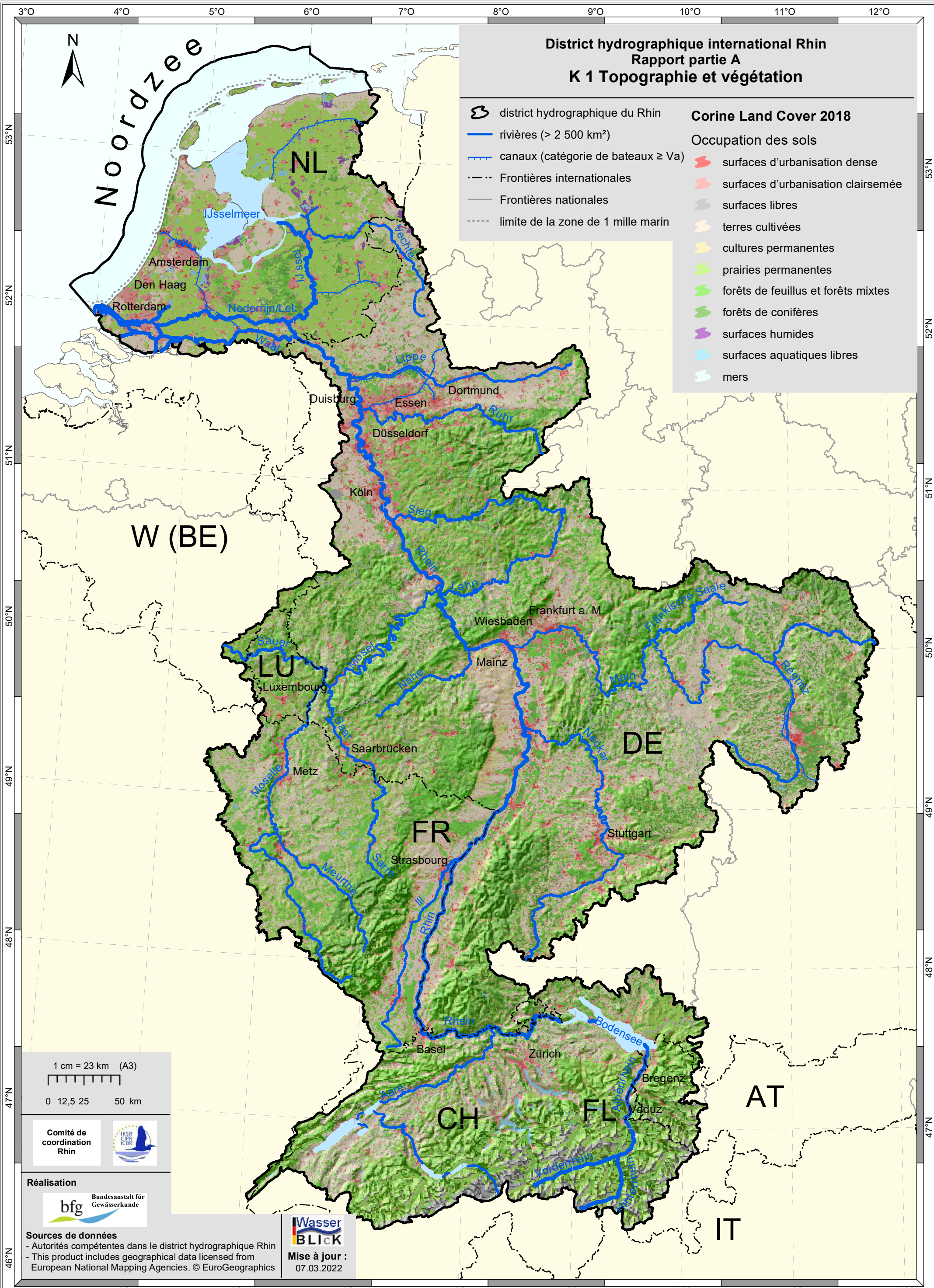


District hydrographique international Rhin Rapport partie A K 1 Topographie et végétation

-  district hydrographique du Rhin
 -  rivières (> 2 500 km²)
 -  canaux (catégorie de bateaux ≥ Va)
 -  Frontières internationales
 -  Frontières nationales
 -  limite de la zone de 1 mille marin
- Corine Land Cover 2018**
- Occupation des sols
-  surfaces d'urbanisation dense
 -  surfaces d'urbanisation clairsemée
 -  surfaces libres
 -  terres cultivées
 -  cultures permanentes
 -  prairies permanentes
 -  forêts de feuillus et forêts mixtes
 -  forêts de conifères
 -  surfaces humides
 -  surfaces aquatiques libres
 -  mers



1 cm = 23 km (A3)
0 12,5 25 50 km

Comité de coordination Rhin



Réalisation



Sources de données
- Autorités compétentes dans le district hydrographique Rhin
- This product includes geographical data licensed from European National Mapping Agencies. © EuroGeographics

Wasser BLICK
Mise à jour : 07.03.2022