
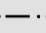



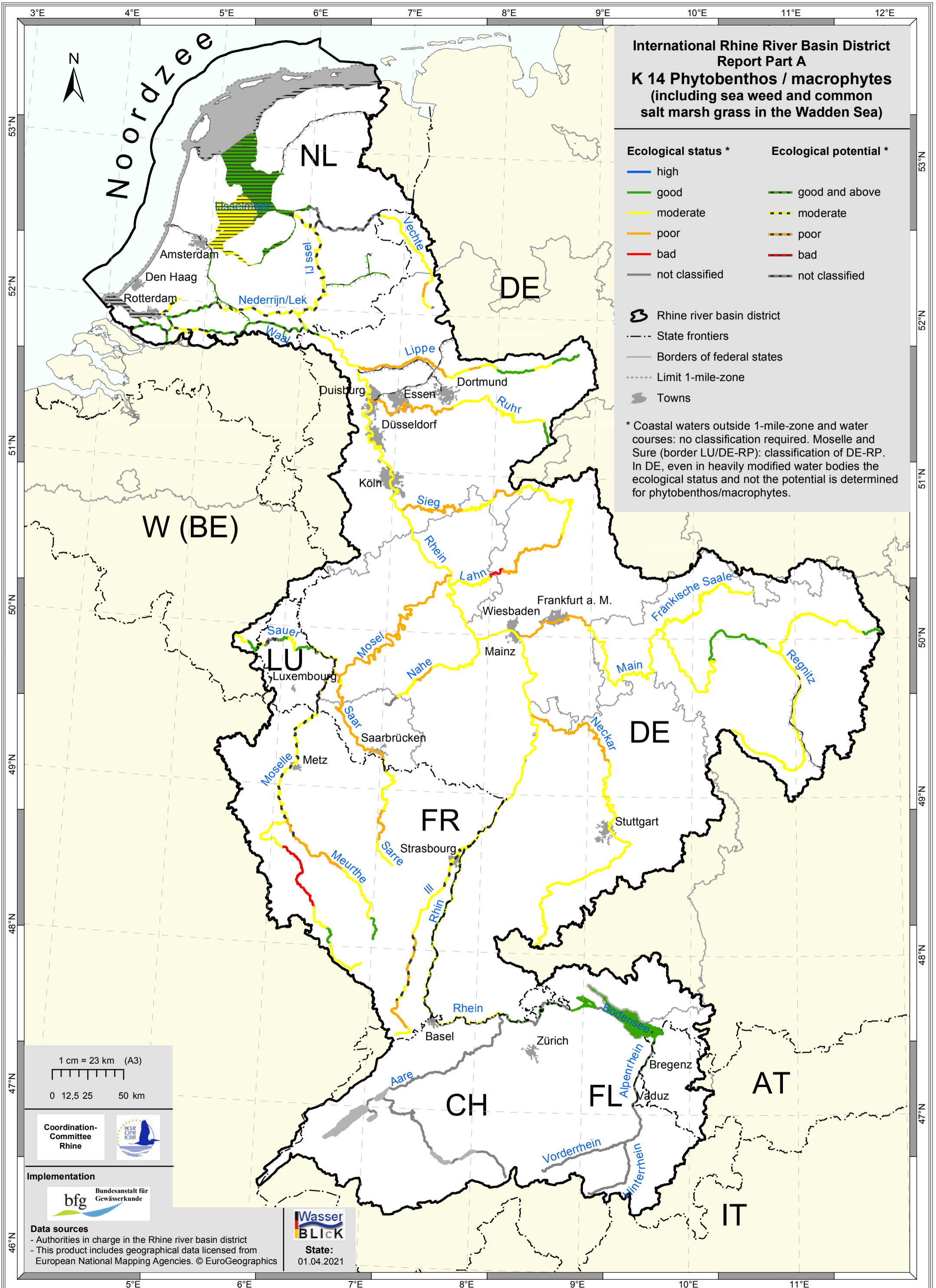


**International Rhine River Basin District  
Report Part A  
K 14 Phytobenthos / macrophytes  
(including sea weed and common  
salt marsh grass in the Wadden Sea)**

| Ecological status * | Ecological potential * |
|---------------------|------------------------|
| — high              | — good and above       |
| — good              | — moderate             |
| — moderate          | — poor                 |
| — poor              | — bad                  |
| — bad               | — bad                  |
| — not classified    | — not classified       |

-  Rhine river basin district
-  State frontiers
-  Borders of federal states
-  Limit 1-mile-zone
-  Towns

\* Coastal waters outside 1-mile-zone and water courses: no classification required. Moselle and Sure (border LU/DE-RP): classification of DE-RP. In DE, even in heavily modified water bodies the ecological status and not the potential is determined for phytobenthos/macrophytes.



1 cm = 23 km (A3)  
0 12,5 25 50 km

Coordination-  
Committee  
Rhine



Implementation  
bfg Bundesanstalt für  
Gewässerkunde

Data sources  
- Authorities in charge in the Rhine river basin district  
- This product includes geographical data licensed from  
European National Mapping Agencies. © EuroGeographics

Wasser  
BLICK  
State:  
01.04.2021