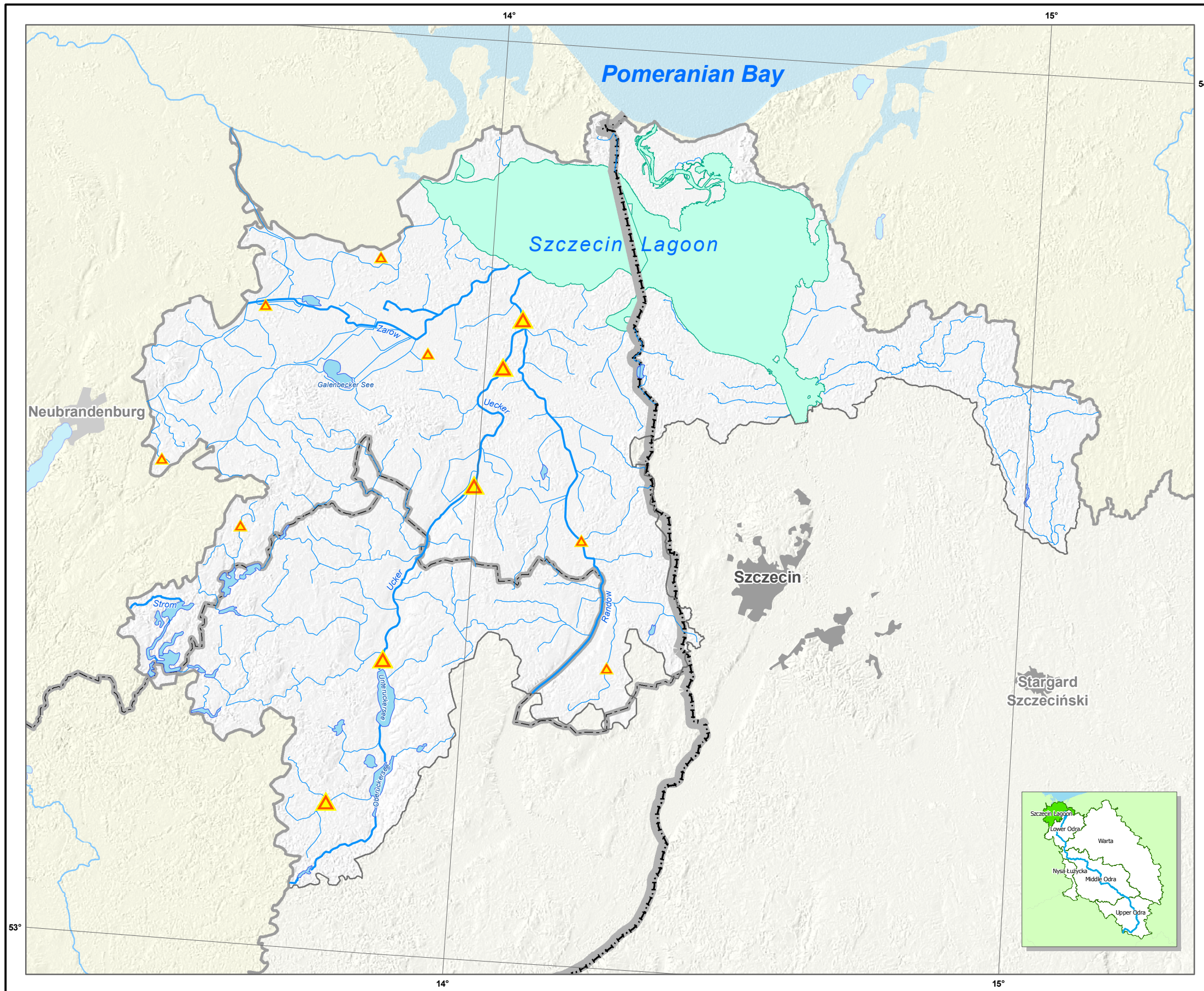


Significant Municipal Point Source Pollution of Surface Waters



Legend:

Significant Municipal Point Source Pollution

- 2 000 ≤ p.e. < 10 000
- 10 000 ≤ p.e. < 100 000
- p.e. ≥ 100 000

Surface Water Bodies

- Rivers with Catchm. ≥ 10 km²
- Lakes ≥ 0.5 km²
- Coastal & Transitional Waters

Boundaries

- Member States
- Internal
- Odra River Basin District
- Working Areas

Cities > 50,000 inh.

Data Sources:

- Data of Competent Authorities of the Reporting States
- ATKIS®, DLM 1000, Copyright © Bundesamt für Kartografie und Geodäsie, 2003
- The Working Group of the Federal States on water issues (LAWA)
- ZABAGED® Zeměměřický úřad
- © Główny Urząd Geodezji i Kartografii
- Mapa Podziału Hydrograficznego Polski - Ministerstwo Środowiska