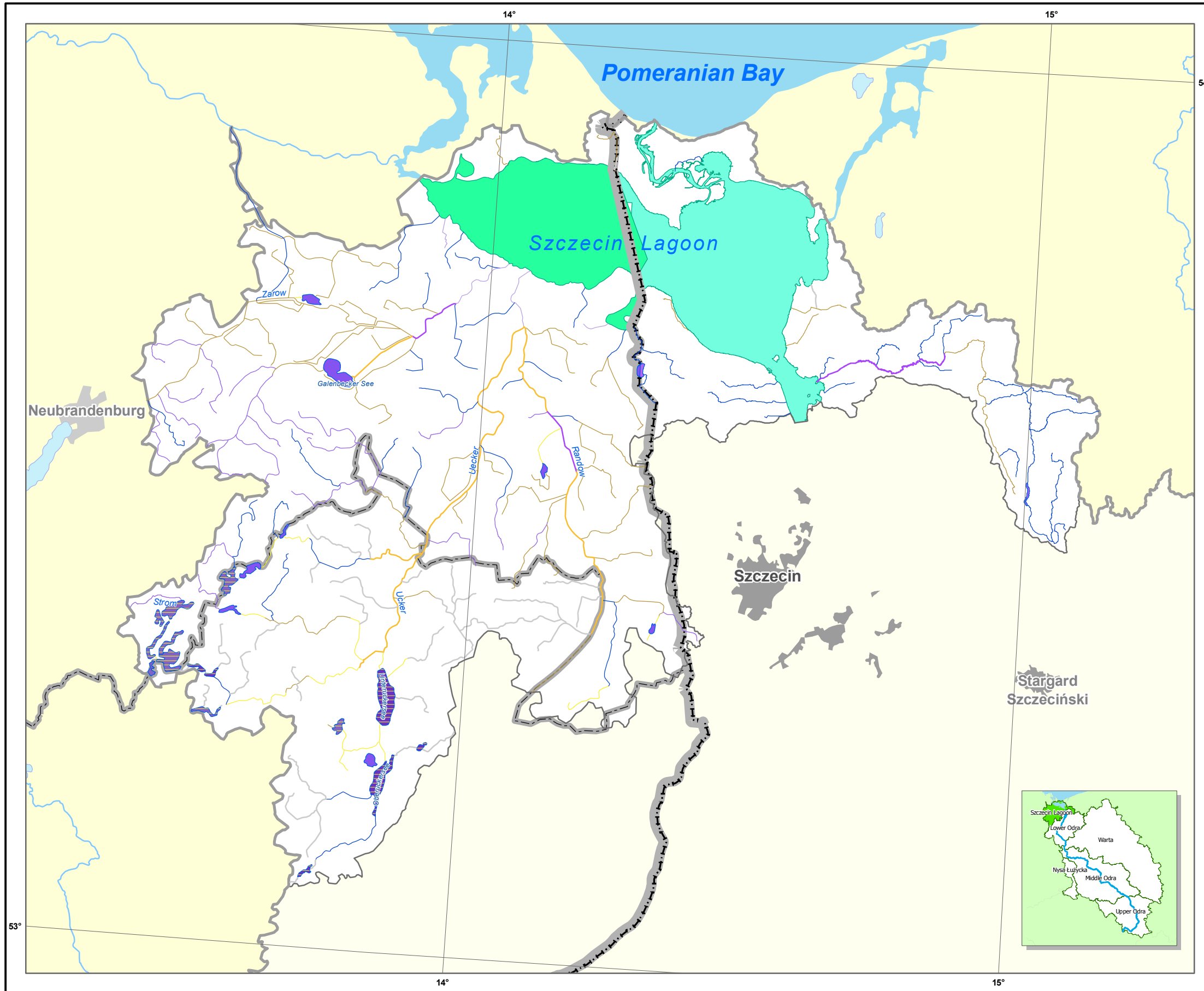


Odra River Basin District - Working Area "Szczecin Lagoon"

Types of Surface Water Bodies



Legend:

- | | |
|--|---|
| Rivers with a Catchment ≥ 10 km² | Lakes ≥ 0.5 km² |
| Ecoregion 14: Central Plains | Ecoregion 14: Central Plains |
| Small sand-dominated lowland rivers (DE 14) | Central plains, calcareous, unstratified, large catchment (PL 3b) |
| Small sandy lowland river (PL 17) | Central plains, calcareous, stratified, large catchment (DE 10) |
| Mid-sized and large sand and loam-dominated lowland rivers (DE 15) | Central plains, calcareous, unstratified, large catchm., resid. time >30d (DE 11) |
| Mid-sized and large sandy-loamy lowland river (PL 19) | Central plains, calcareous, stratified, small catchment (DE 13) |
| Small gravel-dominated lowland rivers (DE 16) | Central plains, calcareous, unstratified, small catchment (DE 14) |
| Backwater and brackish water influenced Baltic Sea tributaries (DE 23) | |
| Ecoregion Independent | |
| Small organic rivers (PL 23) | |
| Small organic substrate-dominated rivers (DE 11) | |
| Mid-sized and large organic substrate-dominated rivers (DE 12) | |
| Lake outflows (DE 21) | |
| Unclassified | |
| PL 0 | |
| DE 0 | |
| Coastal Waters | Transitional Waters |
| Oligohaline inner coast water body (DE B1) | Oligohaline microtidal Transitional Water Body |
| Boundaries | |
| Member States | |
| Internal | |
| Odra River Basin District | |
| Working Areas | |
| Cities > 50,000 inh. | |

Data Sources:

- Data of Competent Authorities of the Reporting States
- ATKIS ®, DLM 1000, Copyright © Bundesamt für Kartografie und Geodäsie, 2003
- The Working Group of the Federal States on water issues (LAWA)
- ZABAGED ® Zeměměřický úřad
- © Główny Urząd Geodezji i Kartografii
- Mapa Podziału Hydrograficznego Polski - Ministerstwo Środowiska