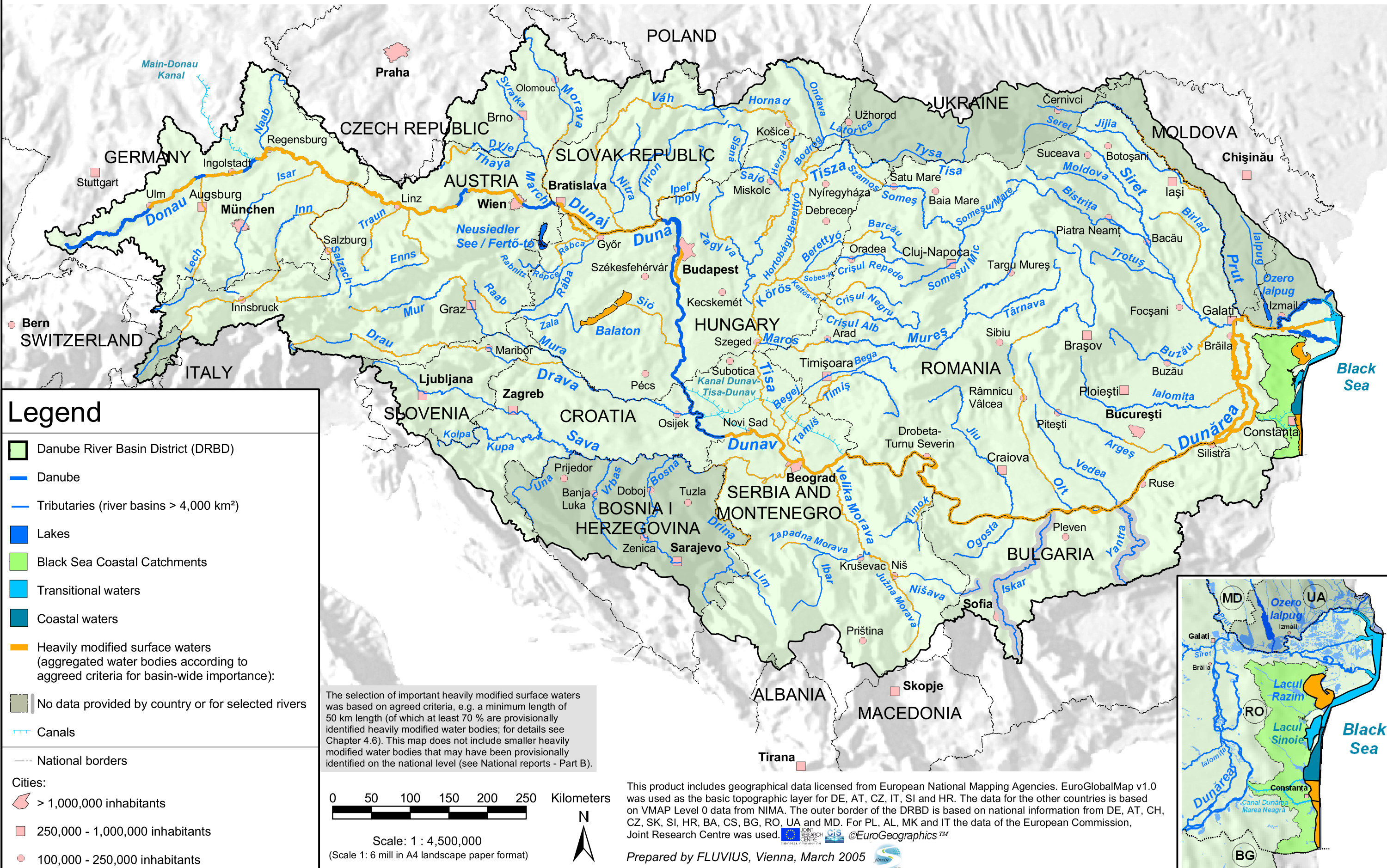


Danube River Basin District

Map 10: Important Heavily Modified Surface Waters (provisional identification)



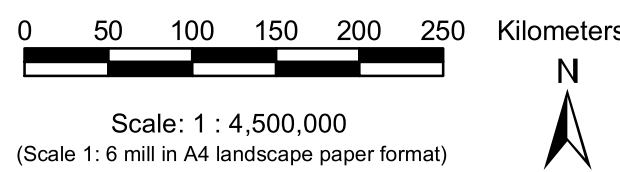
Legend

- Danube River Basin District (DRBD)
- Danube
- Tributaries (river basins > 4,000 km²)
- Lakes
- Black Sea Coastal Catchments
- Transitional waters
- Coastal waters
- Heavily modified surface waters (aggregated water bodies according to agreed criteria for basin-wide importance):
- No data provided by country or for selected rivers
- Canals
- National borders

Cities:

- > 1,000,000 inhabitants
- 250,000 - 1,000,000 inhabitants
- 100,000 - 250,000 inhabitants

The selection of important heavily modified surface waters was based on agreed criteria, e.g. a minimum length of 50 km length (of which at least 70 % are provisionally identified heavily modified water bodies; for details see Chapter 4.6). This map does not include smaller heavily modified water bodies that may have been provisionally identified on the national level (see National reports - Part B).



This product includes geographical data licensed from European National Mapping Agencies. EuroGlobalMap v1.0 was used as the basic topographic layer for DE, AT, CZ, IT, SI and HR. The data for the other countries is based on VMAP Level 0 data from NIMA. The outer border of the DRBD is based on national information from DE, AT, CH, CZ, SK, SI, HR, BA, CS, BG, RO, UA and MD. For PL, AL, MK and IT the data of the European Commission, Joint Research Centre was used.

Prepared by FLUVIUS, Vienna, March 2005

