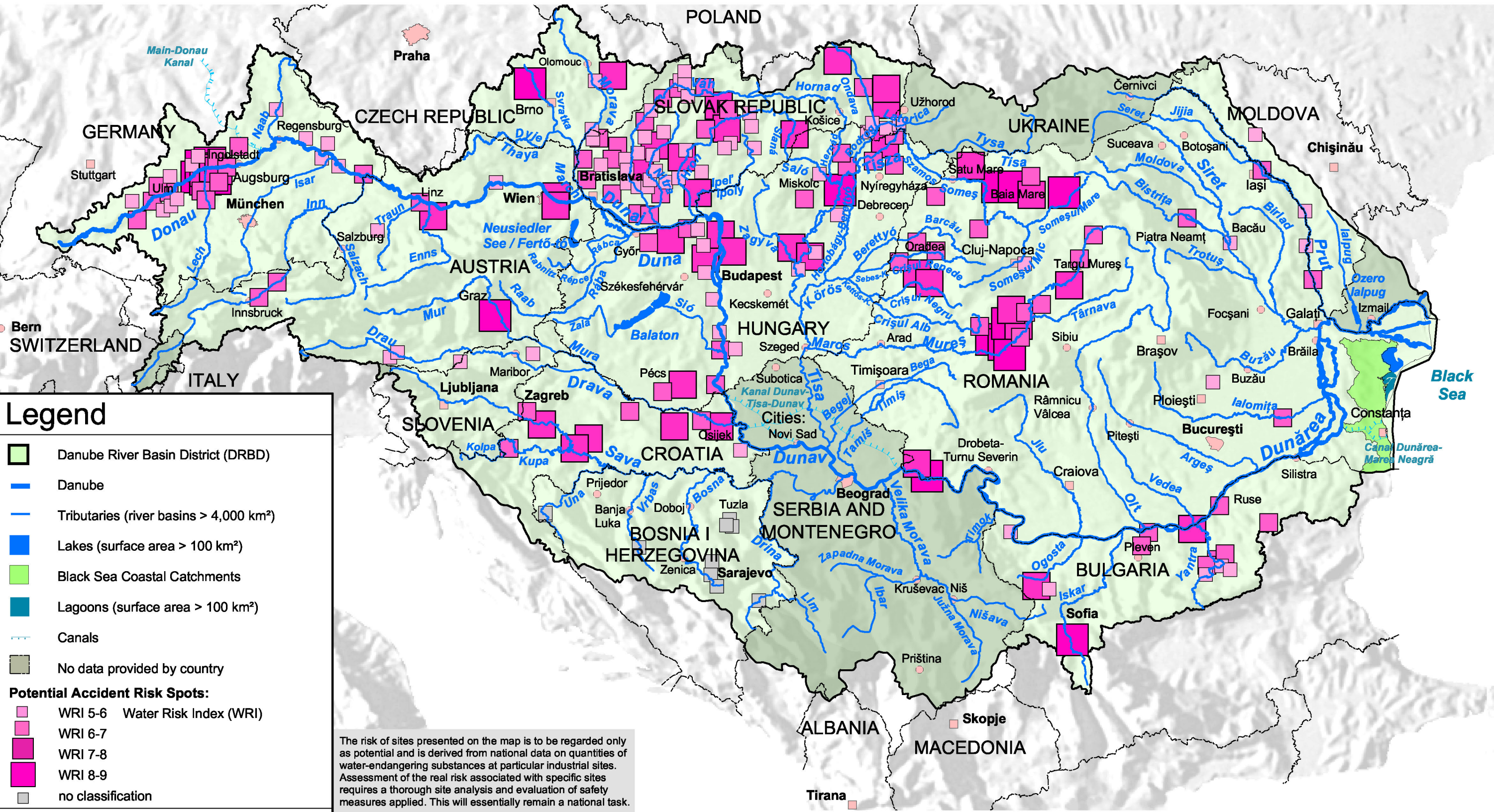


Danube River Basin District

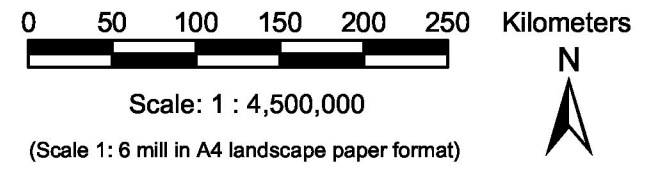
Map 8: Potential Accident Risk Spots



Legend

- Danube River Basin District (DRBD)
 - Danube
 - Tributaries (river basins > 4,000 km²)
 - Lakes (surface area > 100 km²)
 - Black Sea Coastal Catchments
 - Lagoons (surface area > 100 km²)
 - Canals
 - No data provided by country
- Potential Accident Risk Spots:**
- WRI 5-6 Water Risk Index (WRI)
 - WRI 6-7
 - WRI 7-8
 - WRI 8-9
 - no classification
- National borders
- Cities:**
- > 1,000,000 inhabitants
 - 250,000 - 1,000,000 inhabitants
 - 100,000 - 250,000 inhabitants

The risk of sites presented on the map is to be regarded only as potential and is derived from national data on quantities of water-endangering substances at particular industrial sites. Assessment of the real risk associated with specific sites requires a thorough site analysis and evaluation of safety measures applied. This will essentially remain a national task.



This product includes geographical data licensed from European National Mapping Agencies. EuroGlobalMap v1.0 was used as the basic topographic layer for DE, AT, CZ, IT, SI and HR. The data for the other countries is based on VMAP Level 0 data from NIMA. The outer border of the DRBD is based on national information from DE, AT, CH, CZ, SK, SI, HR, BA, CS, BG, RO, UA and MD. For PL, AL, MK and IT the data of the European Commission, Joint Research Centre was used.