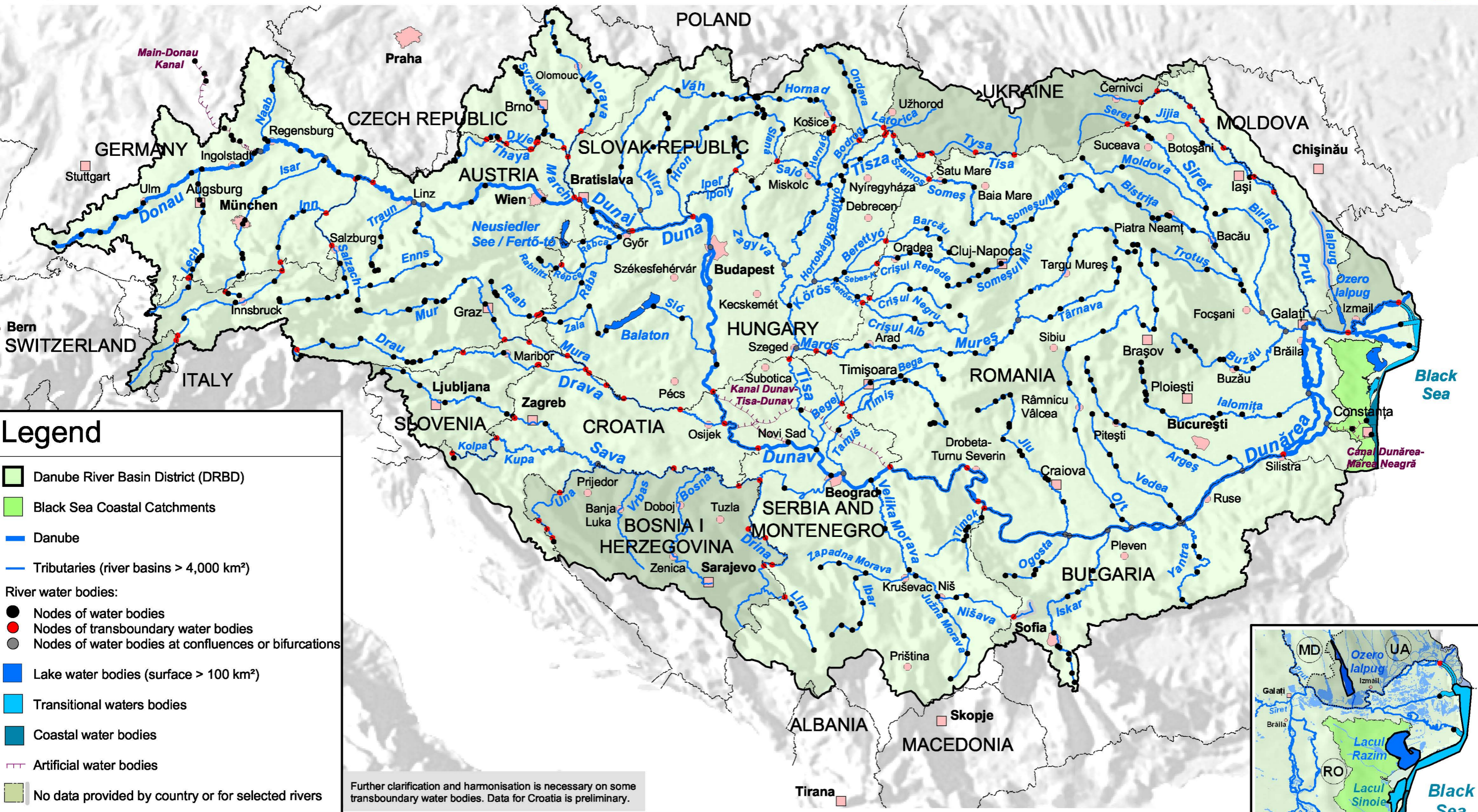


Danube River Basin District

Map 4: Surface Water Bodies



Legend

- Danube River Basin District (DRBD)
- Black Sea Coastal Catchments
- Danube
- Tributaries (river basins > 4,000 km²)

River water bodies:

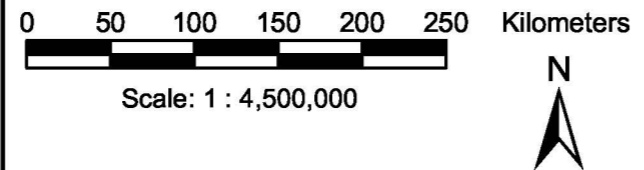
- Nodes of water bodies
- Nodes of transboundary water bodies
- Nodes of water bodies at confluences or bifurcations
- Lake water bodies (surface > 100 km²)
- Transitional water bodies
- Coastal water bodies
- Artificial water bodies
- No data provided by country or for selected rivers

--- National borders

Cities:

- > 1,000,000 inhabitants
- 250,000 - 1,000,000 inhabitants
- 100,000 - 250,000 inhabitants

Further clarification and harmonisation is necessary on some transboundary water bodies. Data for Croatia is preliminary.



This product includes geographical data licensed from European National Mapping Agencies. EuroGlobalMap v1.0 was used as the basic topographic layer for DE, AT, CZ, IT, SI and HR. The data for the other countries is based on VMAP Level 0 data from NIMA. The outer border of the DRBD is based on national information from DE, AT, CH, CZ, SK, SI, HR, BA, CS, BG, RO, UA and MD. For PL, AL, MK and IT the data of the European Commission, Joint Research Centre was used.

Prepared by FLUVIUS, Vienna, March 2005

